

## WATCH TOGETHER

### MOLLY OF DENALI

WITF TV  
M-F 7am  
WITFK 24/7  
M-F 1pm; 6pm



## EXPLORE TOGETHER

Join Molly, an Alaska Native girl, her dog Suki, and friends Tooey and Trini on their adventures in epically beautiful Alaska. Along the way, Molly's life is enhanced, kept on track, and flat-out saved by maps, guide books, websites, weather reports, and more. Your child will learn language arts, science and social studies skills.



Molly uses lots of resources like maps, charts and books to help her create plans to solve problems. Ask your child how they find answers to a question they have. Share how you find answers like googling, looking in a dictionary, using GPS, or watching the weather report on TV.

PA STANDARD: 1.5.K.C - ASK AND ANSWER QUESTIONS...TO SEEK HELP, GET INFORMATION, OR CLARIFY SOMETHING.  
3.2.4.A - IDENTIFY AND USE THE NATURE OF SCIENTIFIC AND TECHNOLOGICAL KNOWLEDGE. 7.1.K.A - EXPLAIN HOW A MAP IS A REPRESENTATION OF PLACES.



Molly makes a lot of predictions and tests them. Try this math game to make a prediction. Gather two dice from a board game. Ask your child to predict what number they will roll. What is the lowest they could get from two dice? 2. What is the highest? 12. Make a chart with three columns—too high, too low, and just right. Then make a guess and roll. Make tally marks in the columns to record their answers—too high, too low, or just right.

PA STANDARD: 2.1.K.A.3 - APPLY THE CONCEPT OF MAGNITUDE TO COMPARE NUMBERS AND QUANTITIES.  
2.1.1.B.1 - EXTEND THE COUNTING SEQUENCE TO READ AND WRITE NUMERALS TO REPRESENT OBJECTS.



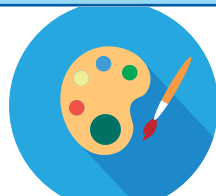
Molly sometimes needs to know about the weather. People make predictions about the weather using information they gather. Watch a weather report or use a weather app to see the weather predictions for the week. Write them down and then check each day to see if the prediction was correct or incorrect. **EXTEND IT:** Try making your own predictions about the weather by going outside and observing the clouds. Will it rain today?

3.1.4.C - ILLUSTRATE PATTERNS THAT REGULARLY OCCUR AND REOCCUR IN NATURE. 2.4.C - RECOGNIZE AND USE THE ELEMENTS OF SCIENTIFIC INQUIRY TO SOLVE PROBLEMS.  
3.5.4.C - KNOW BASIC WEATHER ELEMENTS.



Visit your local library to borrow an age-appropriate book about an animal your child is interested in learning more about. You might even try looking up an animal you saw on **Molly of Denali**. Read the book together. Create an illustration of the animal. **EXTEND IT:** Fold a piece of paper in thirds to make a pamphlet telling about your animal. Add facts you learned and illustrations.

PA STANDARD: 3.3.4.A - KNOW THE SIMILARITIES AND DIFFERENCES OF LIVING THINGS. 3.3.4.B - KNOW THAT LIVING THINGS ARE MADE UP OF PARTS THAT HAVE SPECIFIC FUNCTIONS.  
1.4.K.B USE A COMBINATION OF DRAWING, DICTATING, AND WRITING.



Head outside to a nearby sidewalk or your driveway with some sidewalk chalk. Try drawing a map of your neighborhood or some animals you learned about on **Molly of Denali**.

PA STANDARD: 1.4.K.B USE A COMBINATION OF DRAWING, DICTATING, AND WRITING. 7.1.K.A - EXPLAIN HOW A MAP IS A REPRESENTATION OF PLACES.