

**WATCH TOGETHER** | **EXPLORE TOGETHER**

**HERO ELEMENTARY**

WITF TV  
M-F 8am

WITFK 24/7  
M-F 1:30pm; 6:30pm



**Hero Elementary** is a school for budding superheroes, where kids learn to master their innate powers, like flying and teleportation, while exploring science along the way. The series aims to give children the tools to solve problems by thinking and acting like scientists and igniting their natural curiosity and empathy.



Ask your child if they have a hero. What makes someone a hero? Listen and share your thoughts with your child.

PA STANDARD: 1.5.1.D - DESCRIBE PEOPLE, PLACES, THINGS, AND EVENTS WITH RELEVANT DETAILS, EXPRESSING IDEAS.



Be a hero and follow a recipe in the kitchen for real or for pretend. Gather all your measuring tools like measuring spoons, cups, liquid measuring cups, etc. Help children follow a real recipe or provide a couple pots and water for experimenting with these really important kitchen tools. Talk with your child. Which tools work best for various tasks? Why?

PA STANDARD: 2.4.K.A.1 - DESCRIBE AND COMPARE ATTRIBUTES OF LENGTH, AREA, WEIGHT, AND CAPACITY OF EVERYDAY OBJECTS.



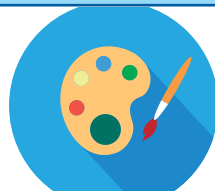
Think about a problem in your community or home like litter or chore distribution. Be a hero and practice some engineering skills. Talk about the problem. Brainstorm some solutions. Choose your favorite solution and test it. To learn more about engineering, watch **Family Night: Engineering**. Look for it on your local PBS station or at <https://pennsylvaniapbs.org/digital/family-night-engineering/>.

PA STANDARD: 3.2.4.C - RECOGNIZE AND USE THE ELEMENTS OF SCIENTIFIC INQUIRY TO SOLVE PROBLEMS. 3.2.4.D - RECOGNIZE AND USE THE TECHNOLOGICAL DESIGN PROCESS TO SOLVE PROBLEMS.



Write an acrostic poem using the word HERO. Write the letters H, E, R, and O down the side of a page and then think of words or groups of words that start with each letter (like Heart for H) to create your poem. **EXTEND IT:** Try writing a different kind of poem about your hero or being a hero.

PA STANDARD: 1.1.K.C - DEMONSTRATE UNDERSTANDING OF SPOKEN WORDS, SYLLABLES, AND SOUNDS (PHONEMES).  
1.4.K.B - USE A COMBINATION OF DRAWING, DICTATING, AND WRITING.



If you were a super hero, what would your uniform or costume be? Design your super hero outfit using bits of fabric or felt or instead, draw your outfit on a piece of paper. How would your outfit help you do your super hero job?

PA STANDARD: 3.2.4.D - RECOGNIZE AND USE THE TECHNOLOGICAL DESIGN PROCESS TO SOLVE PROBLEMS. 3.4.4.A - RECOGNIZE BASIC CONCEPTS ABOUT THE STRUCTURE AND PROPERTIES OF MATTER.  
1.4.K.B - USE A COMBINATION OF DRAWING, DICTATING, AND WRITING.